

SparkWave SDR

STM-1 Compact



The SparkWave SDR STM-1 is intended for microwave transmission of STM-1 traffic, operating in 7, 8, 13, 15, 18 and 23 GHz frequency range.

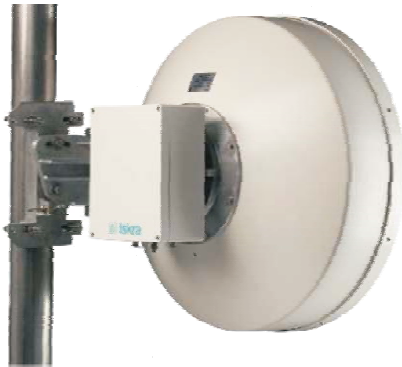
SPARKWAVE
digital microwave radio





SparkWave SDR

STM-1 Compact



Split Mount solution with STM-1 IDU and compact ODU.

The STM-1 tributary interface can be optical or electrical. An additional 2Mbit/s wayside channel per traffic channel is available.

Configurations 2+0 and 1+1 with the possibility of using the stand-by connection for low priority traffic are possible.

A management system with an SNMP agent and a OSPF router is built into the unit. No additional equipment is needed except a standard PC computer with built-in web browser.

The unit enables operation in ATPC (Automatic Transmitted Power Control) mode.

Technical data

Frequency plan	7 GHz	8 GHz	13 GHz	15 GHz	18 GHz	23 GHz
RF output power in dBm	22/26	22/26	20	20	18	18
Channel spacing	28 MHz	28 MHz	28 MHz	28 MHz	27,5 MHz	28 MHz
Frequency stability	± 5 ppm					
Frequency seeding step	0,25 MHz					
ATPC output power adjusting range	20 dB in 1 dB step					
Receiver treshold at antenna connector in dBm for BERR 10⁻⁵	128QAM/28MHz		-69			
Link protection modes	Hot Stand-By Space Diversity Frequency Diversity Hitless switch					
Traffic interface	Bit rate Installation mode	155,52 Mbit/s ± 20 ppm SFP plug-in module (electrical or optical)				
E1 wayside channel	ITU-T recommendations Bit rate (plesiochronous) Multiplexing principle	G.703 point 6 2.048 kbit/s RSOH and MSOH bytes				
Other interface	Management interface Service channel interface	10 Base-T/100 Base-TX adaptive 10 Base-T/100 Base-TX adaptive				
Mechanical/ Environmental	Operation climatic conditions (temp./humidity.) IDU ODU Storage/transport condit. EMC compatibility Power Supply Power consumption IDU Power consumption ODU Dimensions in mm (HxWxD) IDU Dimensions in mm (HxWxD) ODU Weight IDU Weight ODU	-5-+45°C/8-100% ETSI EN 300 019 class 3.1E -33°C-+50°C/5%-95% ETSI EN 300 019 class 4.1E ETSI EN 300 019 class 1.1/class 2.3 ETSI 301 489-4 From 20V to 72V ETSI EN 300 132 (1U/2U) <19W/ <39W <25W (1U/2U) 45x442x240/86x442x240 200x150x80/F305x120 (1U/2U) 3,17kg/ <5,96kg <6kg				