



# WM3M4C

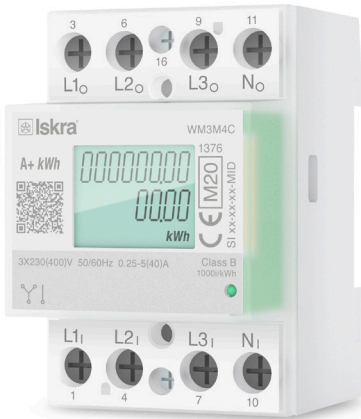
Smart energy  
meter for  
EV charging  
stations



Fully Eichrecht  
compliant



# WM3M4C



- ✓ MID certified
- ✓ High temperature operation
- ✓ Digital signing

WM3M4C measures energy directly and bi-directionally in 4 or 2-wire networks according to the principle of fast sampling of voltage and current signals. It is used for energy measurements in the three-phase and single-phase electrical charger stations.

A built-in microprocessor calculates power, energy, current, voltage, power factor, power angle, frequency, harmonics of THD voltage, and THD current harmonics. WM3M4C can detect and log events relevant for charging via RS485 communication. It can produce relevant digital signature for charging event.



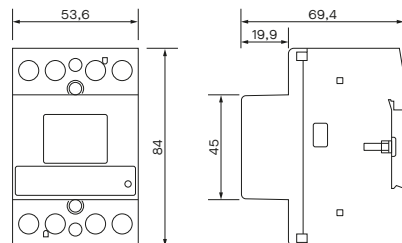
Fully Eichrecht compliant

- Module B certified
- Module D certified



## Specifications

- ▶ MID approval for class B according to EN 50470-3
- ▶ Bidirectional energy measurement (import/export)
- ▶ Maximum current 40 A ( $I_{max}$ )
- ▶ Basic current 5 A ( $I_b$ )
- ▶ Operation temperature from  $-25^{\circ}\text{C}$  to  $+70^{\circ}\text{C}$
- ▶ QR code for public key
- ▶ 230 V rated system voltage input ( $U_n$ )
- ▶ Reference frequencies 50 Hz or 60 Hz
- ▶ Custom LCD display with 8 digits
- ▶ LED constant 1000 imp/kWh
- ▶ RS485 MODBUS communication
- ▶ IR serial communication
- ▶ Support OCMF communication protocol
- ▶ Backlight for better visibility – remote settable
- ▶ Settable LCD view
- ▶ Sealable terminal cover
- ▶ 3 DIN module width



Iskra, d.o.o.  
Stegne 21, Ljubljana, Slovenia  
[info@iskra.eu](mailto:info@iskra.eu)

[iskra.eu](http://iskra.eu)